

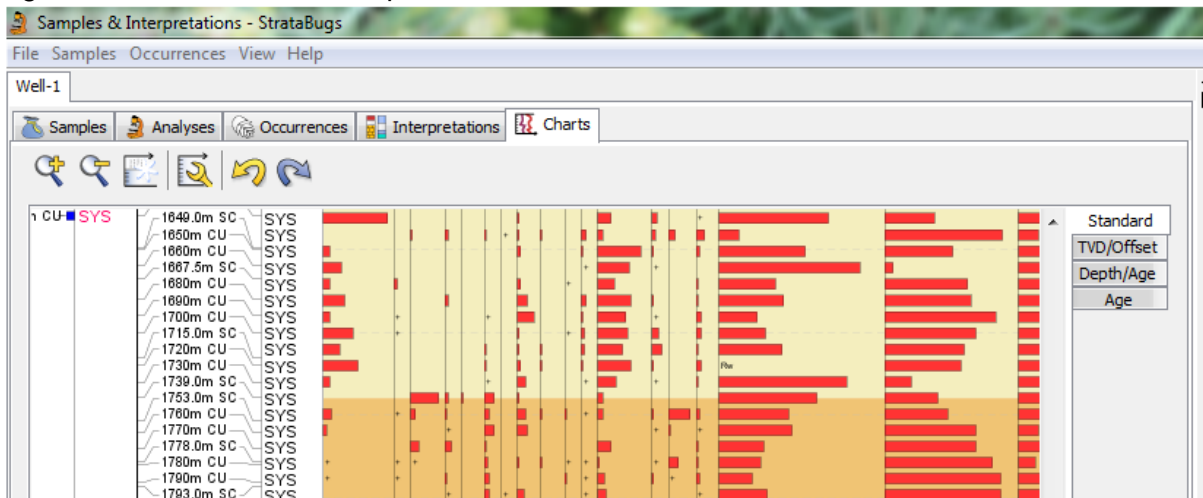
Dear StrataBugs user,

This is one of a series of occasional newsletters for users of the StrataBugs system. If you wish to be removed from the mailing list, or if you have received this from a third party and want to be added to the list, let us know by reply.

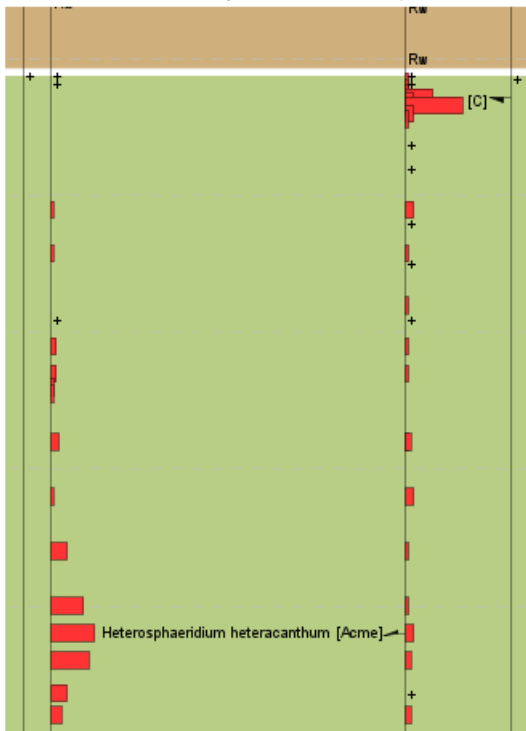
All of the comments below relate to Version 2.0 or 2.1.

### Background colour

We've added the ability to display the background colours of any stratigraphic scheme against the taxon distribution panel of the standard chart.



Also in this chart you can now plot event picks within the distribution panel:



## Schemes

We have added more schemes available for download from our site [here](#).

If you would like us to add a published scheme then let us know and we will consider it. Additionally, we have been testing the use of using the data packages available from [Neflex](#), which can be imported to StrataBugs as Stratigraphic schemes and Composite Standards using the import method for Timescale Creator files.

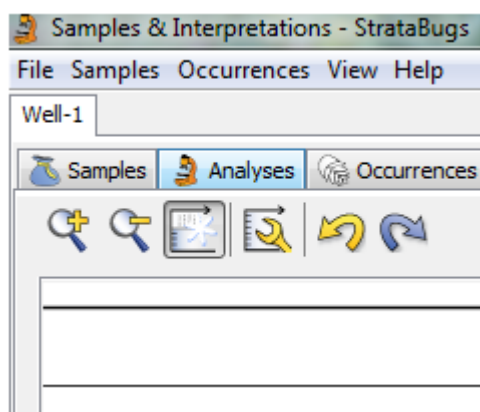
We have added improvements to the Scheme plotter within Schemes & Interpretations to improve the display titles and to enable an alphabetic list of units to be shown alongside the scheme as a unit index.

## Logging sheets

For recording data, we have included the ability to record semi-quantitative data as instead of counts when using the [input feature for printed logging sheets](#). This is one of many ways to record data in v2 alongside the Picklist and Overlays. Remember also that you can use the numeric keypad in conjunction with the Picklist and with Overlays, for rapid entry of numbers.

## Freezing the chart header panes

Most of the chart displays now feature a freeze pane button which allows you to scroll around the chart while retaining a view of the chart panel headers.



## Palaeoenvironment Display in Subsidence/Accumulation chart

We have added the ability to show the palaeoenvironment on the subsidence/accumulation chart for project interpretation in Schemes & Interpretations. This feature allows you to see the palaeobathymetry when comparing burial histories for different sections.



already, we would like to hear from you now. Please don't wait until after we have released the next version.

### **Updating StrataBugs**

Some of you will have received Java security warnings when running the update program from our web site. We have now certified this process and the "publisher" of the updater program should now be indicated as "StrataData" and not "Unknown".

### **Remote Assistance**

We are now able to offer a remote screen sharing assistance service to further improve our support to you.

Please contact us for further information on any of these topics.

StrataData Ltd.